

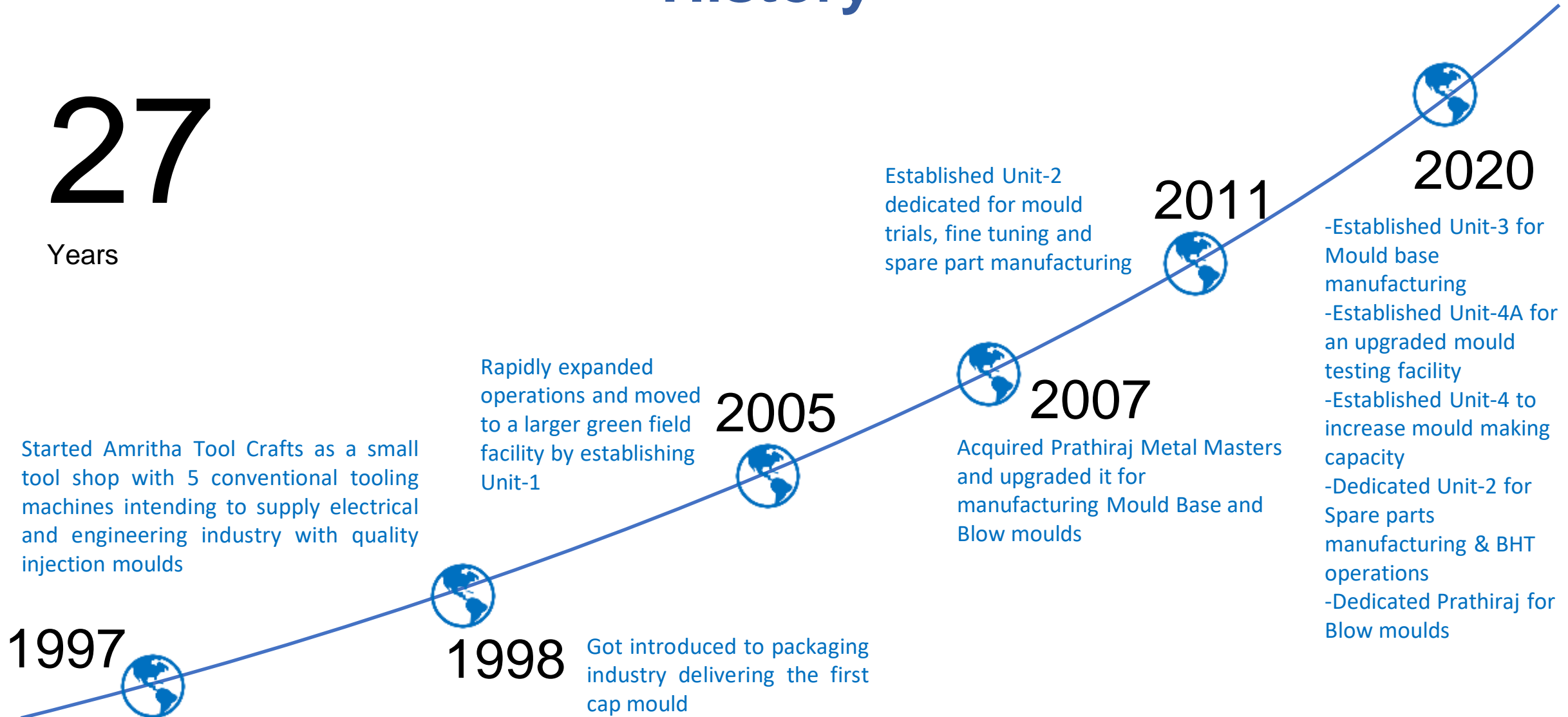


**AMRITHA TOOL CRAFTS PVT. LTD.**

# History

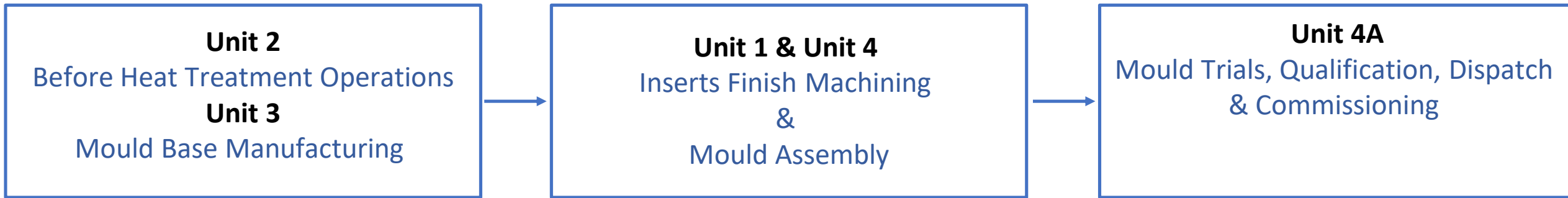
# 27

Years



# Our Unique Business Model

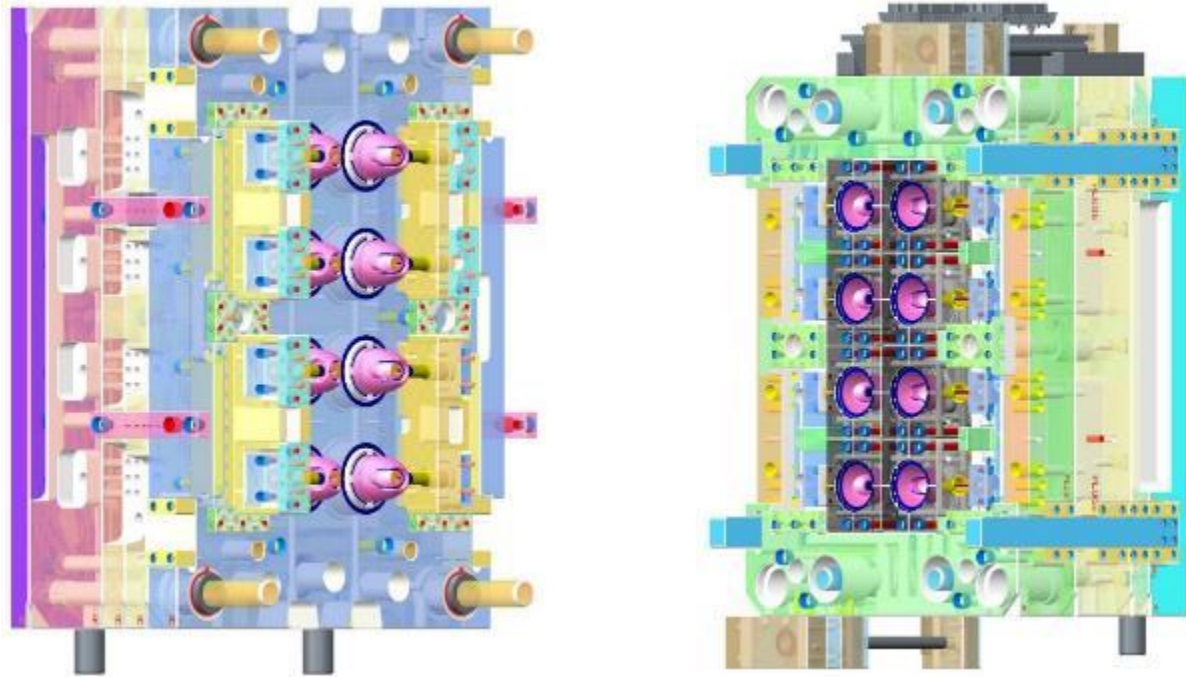
Smooth workflow by dedicating Units to specific activities



## Advantages:

- Decentralised ownership
- Skill set concentration
- Better visibility
- Customer Supplier relationship between Units

# Design Capabilities



- All moulds are designed completely in 3D
- Developed proprietary tool for BOM generation
- Designers focus on innovation and technical design

## Design Software CREO 5

- ✓ Foundation
  - Basic & Surface modelling
- ✓ Expert Mold Base Extension
  - Module for Mold Base development
- ✓ Tool Design Option
  - Core Cavity extraction
- ✓ Plastic Advisor
  - Check flow pattern of the component
- ✓ Tool Kit
  - For Design Automation
- ✓ Auto-Cad
  - 2D Layout
- ✓ Wind chill – PDM essentials

# Machining Software

## CNC Milling

- ✓ Autodesk Delcam 2014
- ✓ Autodesk Powermill 2022

## CNC Turning

- ✓ Autodesk Feature Cam 2022
- ✓ ICAPS

## CNC Wire Edm

- ✓ Fikus Visualcam 2019
- ✓ CadMacro Macro Wire 2022

## CNC Laser 5 – Axis

- ✓ Rhinoceros – 5
- ✓ GF Laser Cam & Design

## CMM

- ✓ Calypso (C) Carl Zeiss
- ✓ MiCAT MCOSMOS

## ROBO CELL

- ✓ WSM Work Center

Automated ROBO controller which transfers and controls the data from CMM to machines.

# Floor Space & Machinery

**Floor space : 30,000 SFT**

**Machinery from world renowned brands**

**For Machining :**



**For Moulding :**

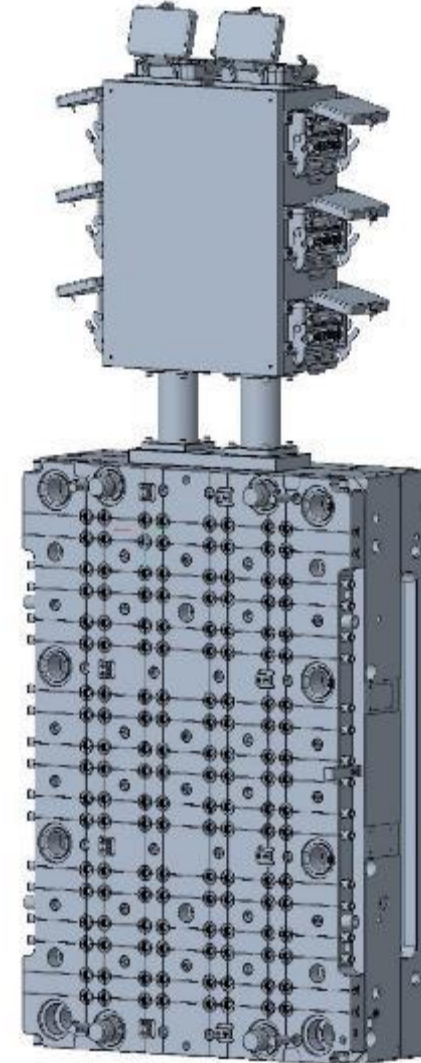
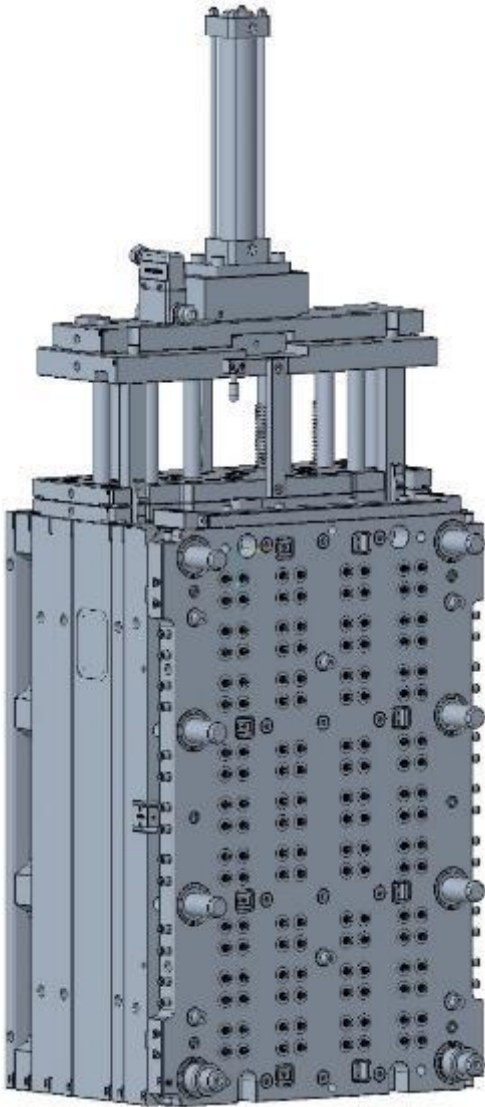


**For Inspection :**



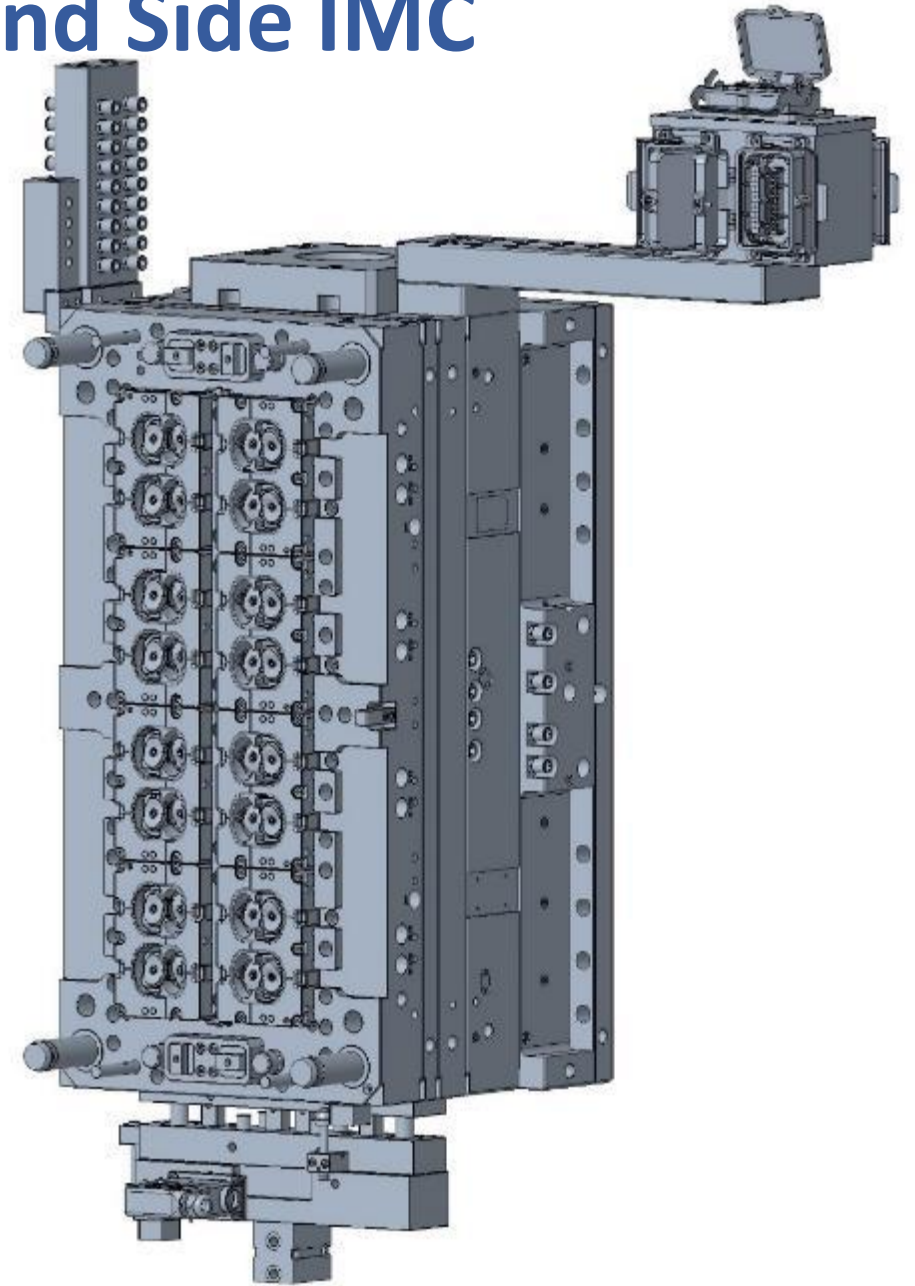
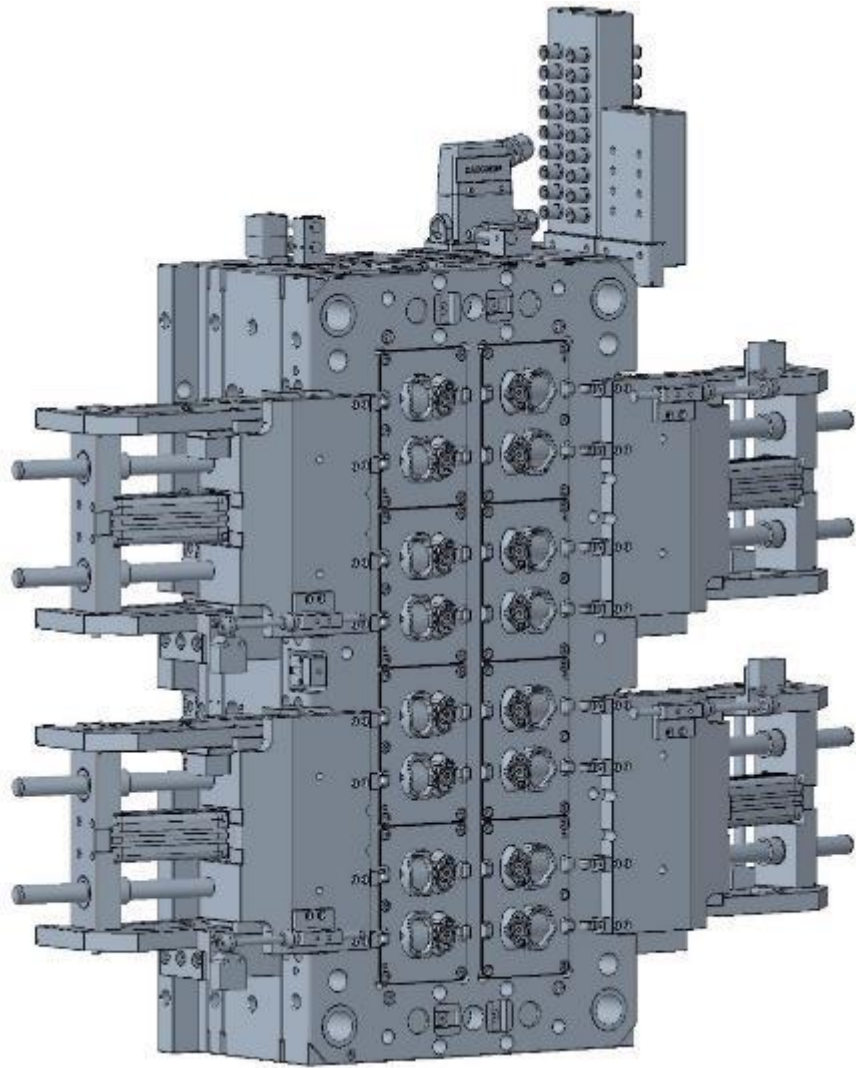
# Mould Technologies

# Unscrewing Mold - 144 Cavity Fez Cap

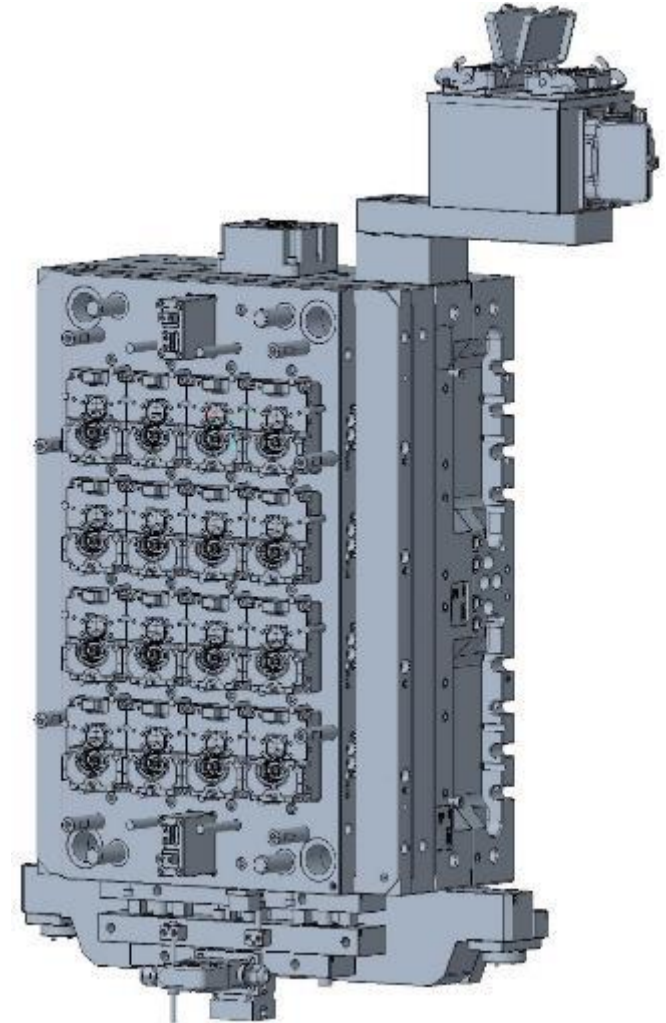
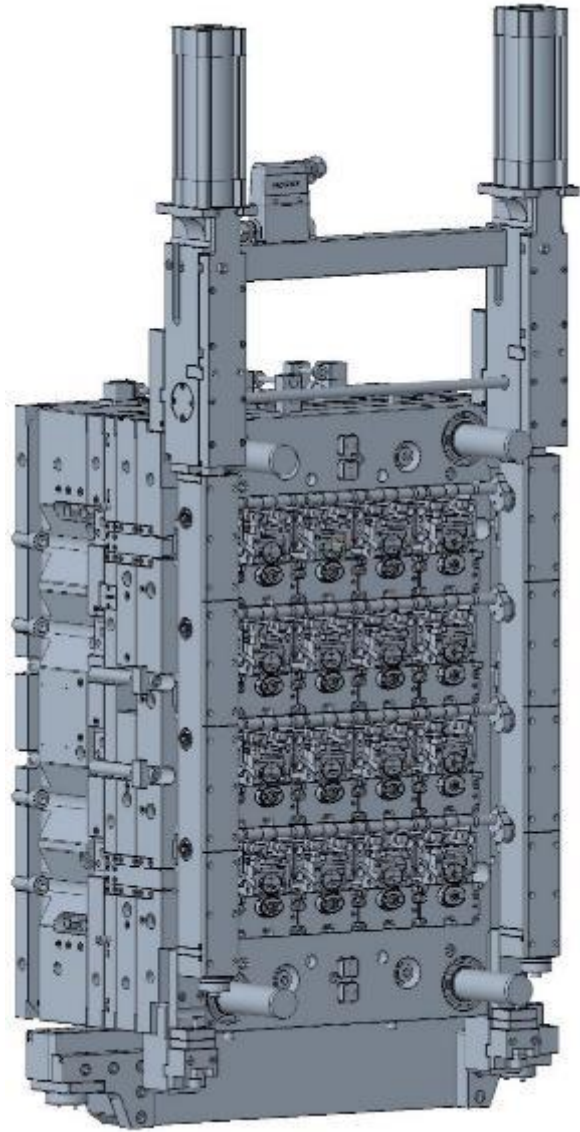




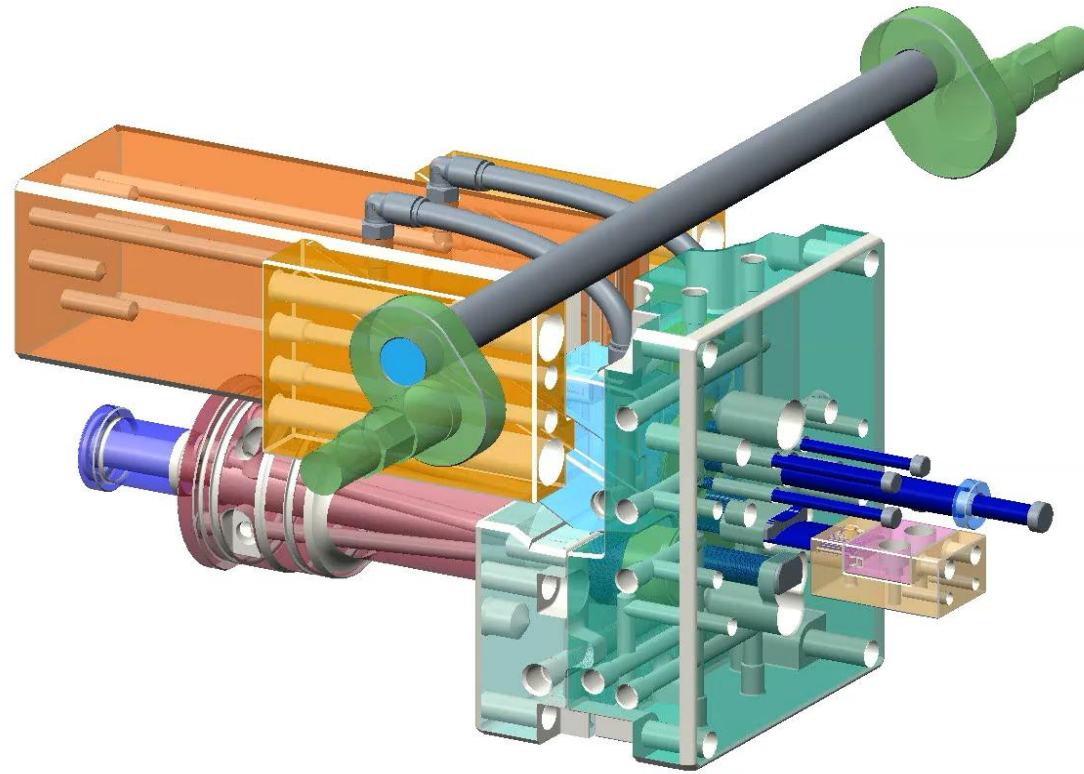
# Bi-colour with Core Back and Side IMC



# Bi-colour with Core Back, Synchronized Slider and Top-down IMC



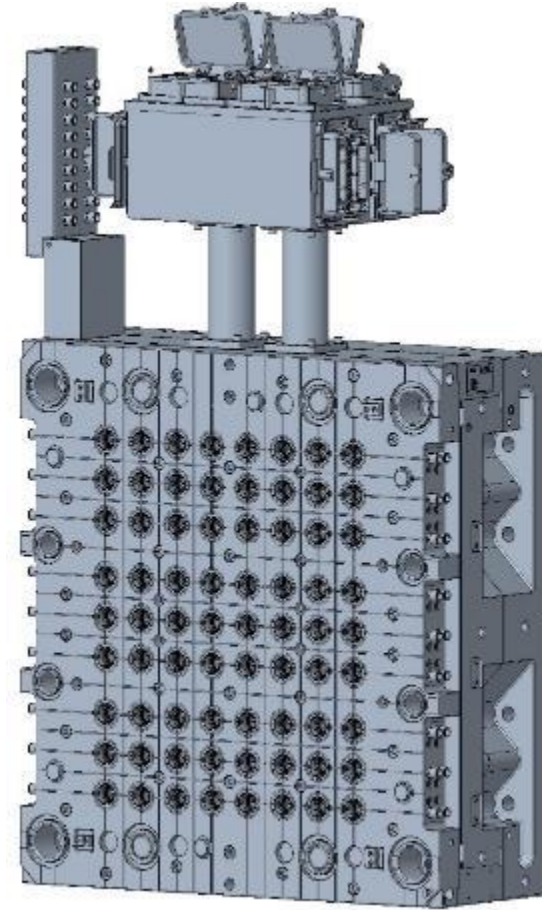
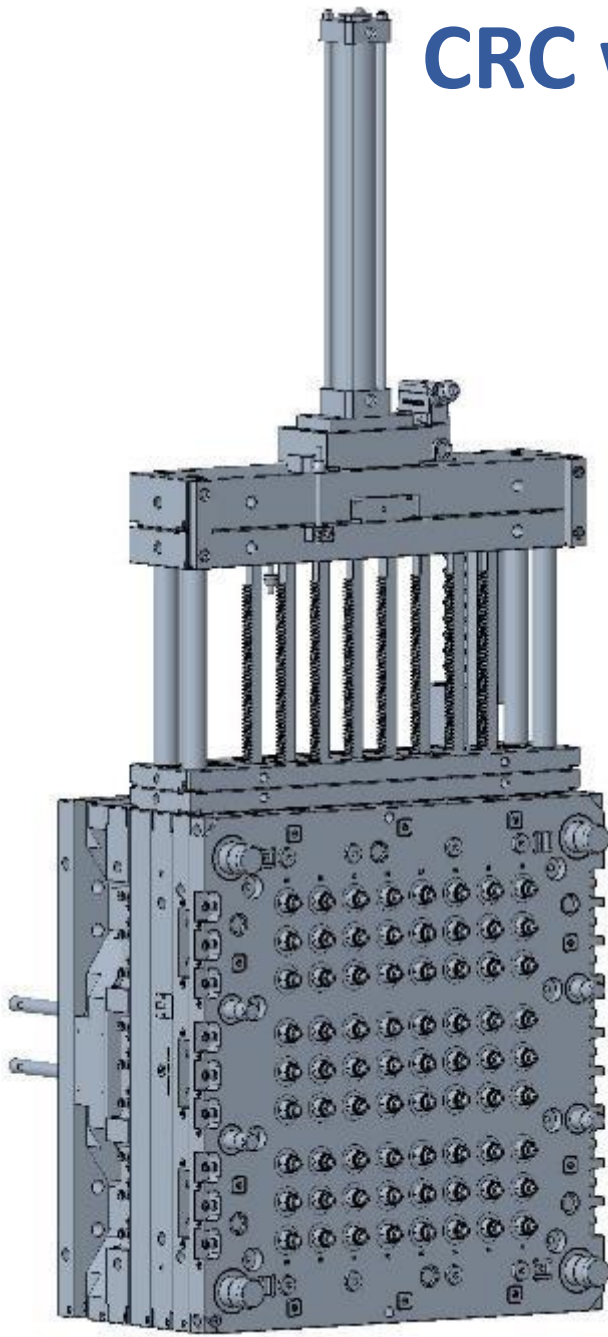
# Synchronised Slider animation



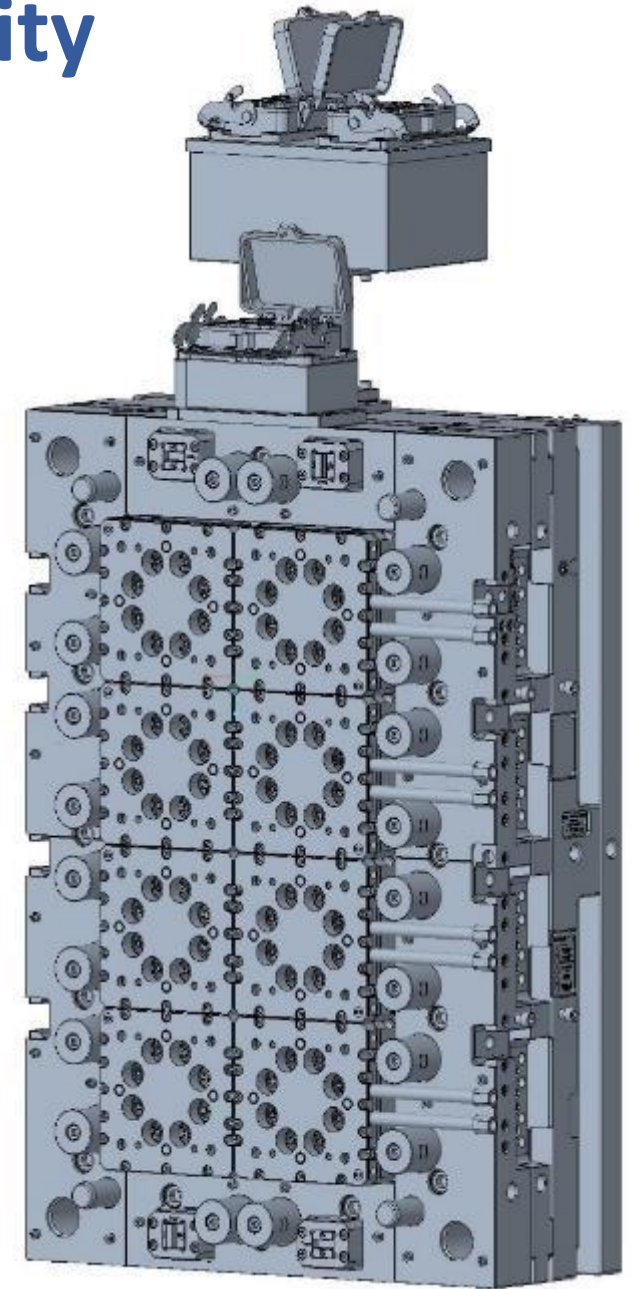
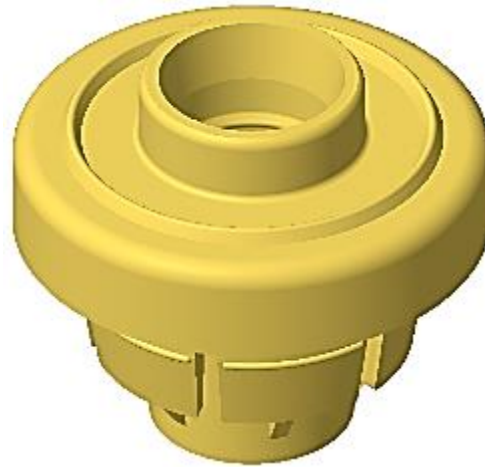
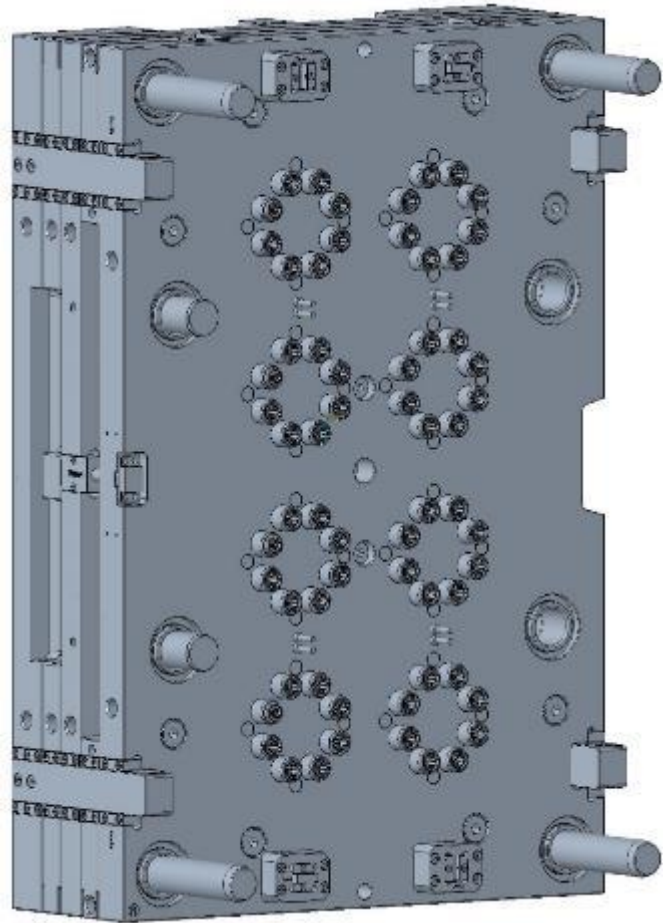
Explode State:E(+)



# CRC with Unscrewing - 72 Cavity

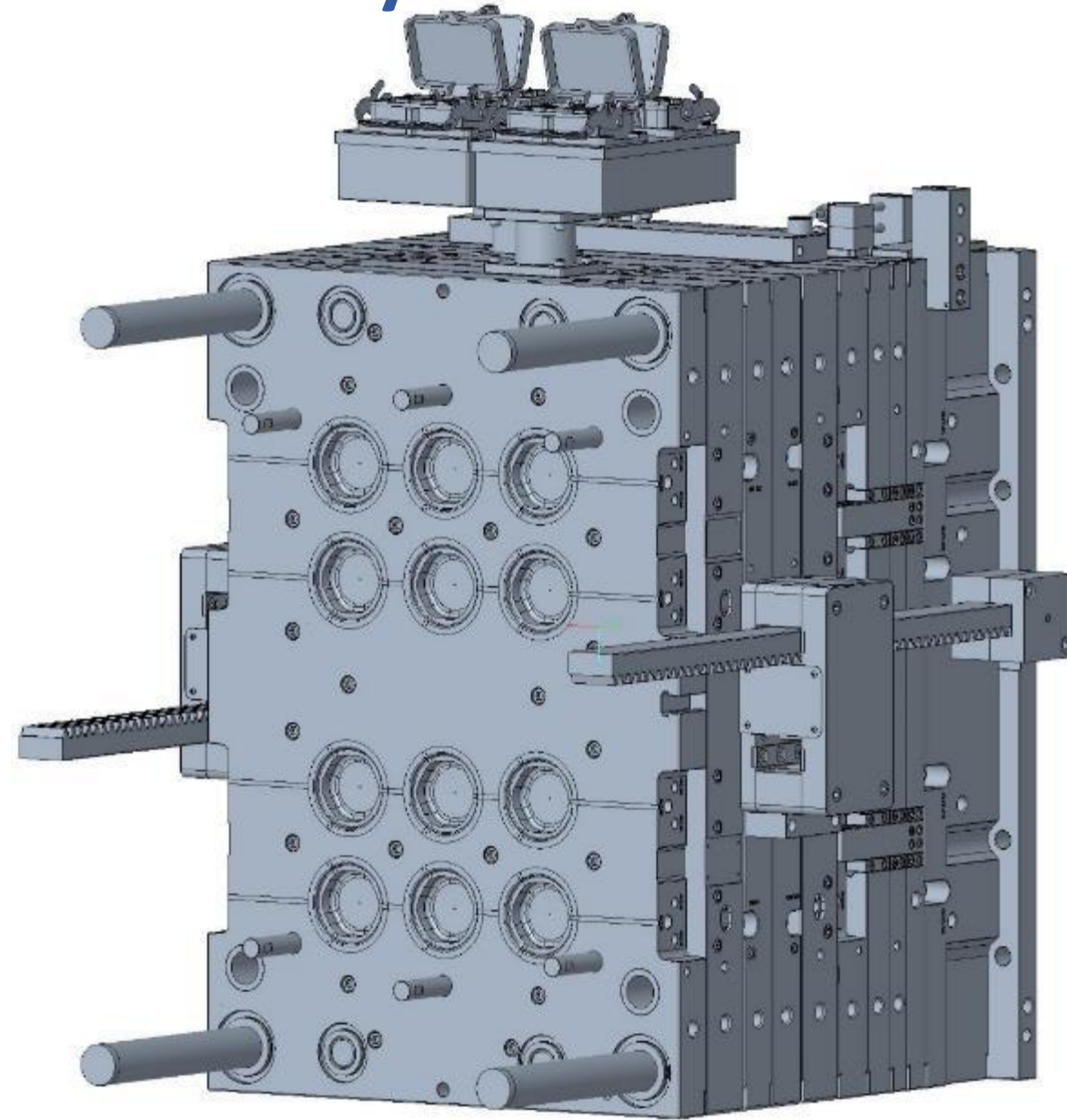
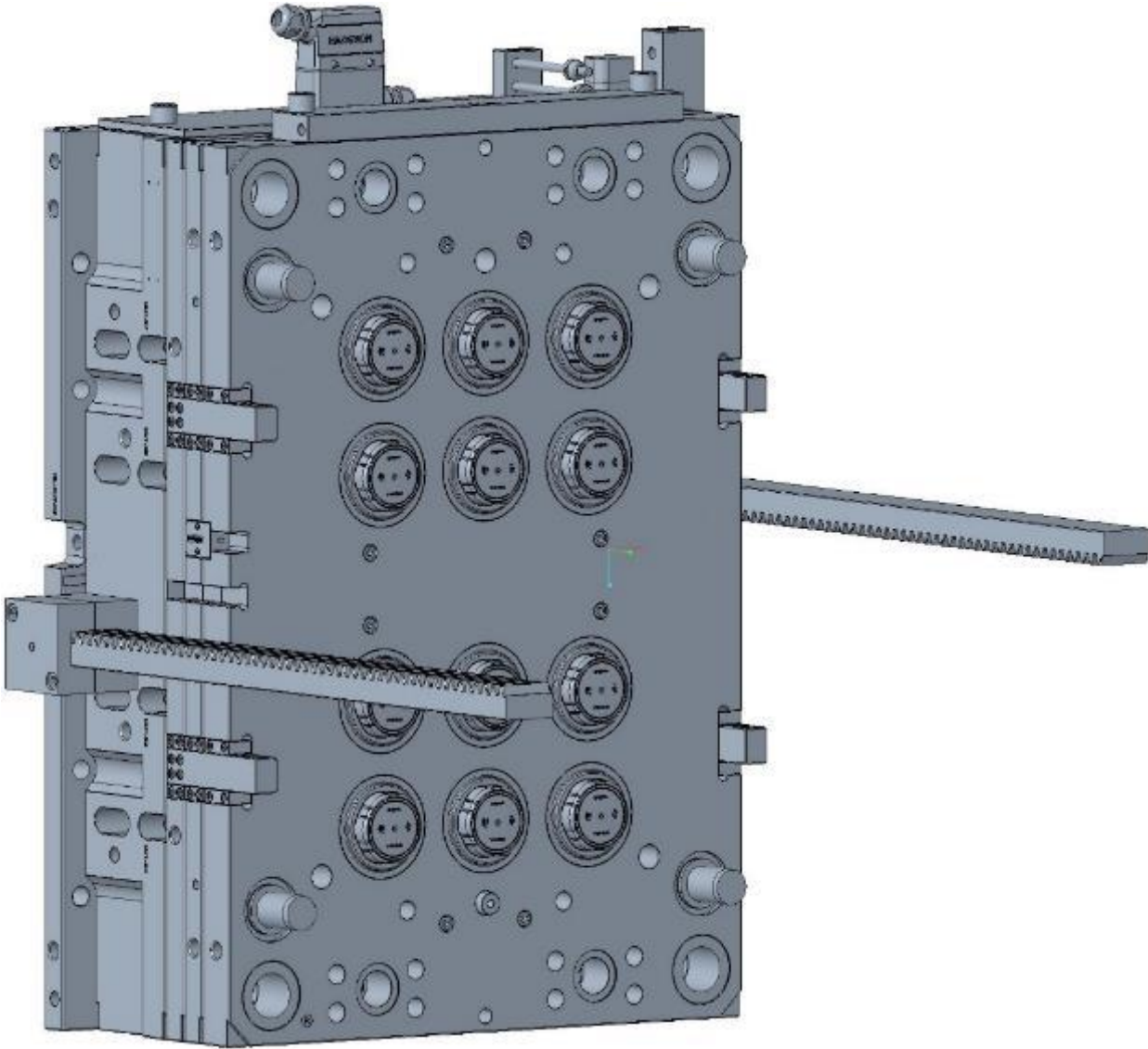


# Side Gated Plug - 64 Cavity

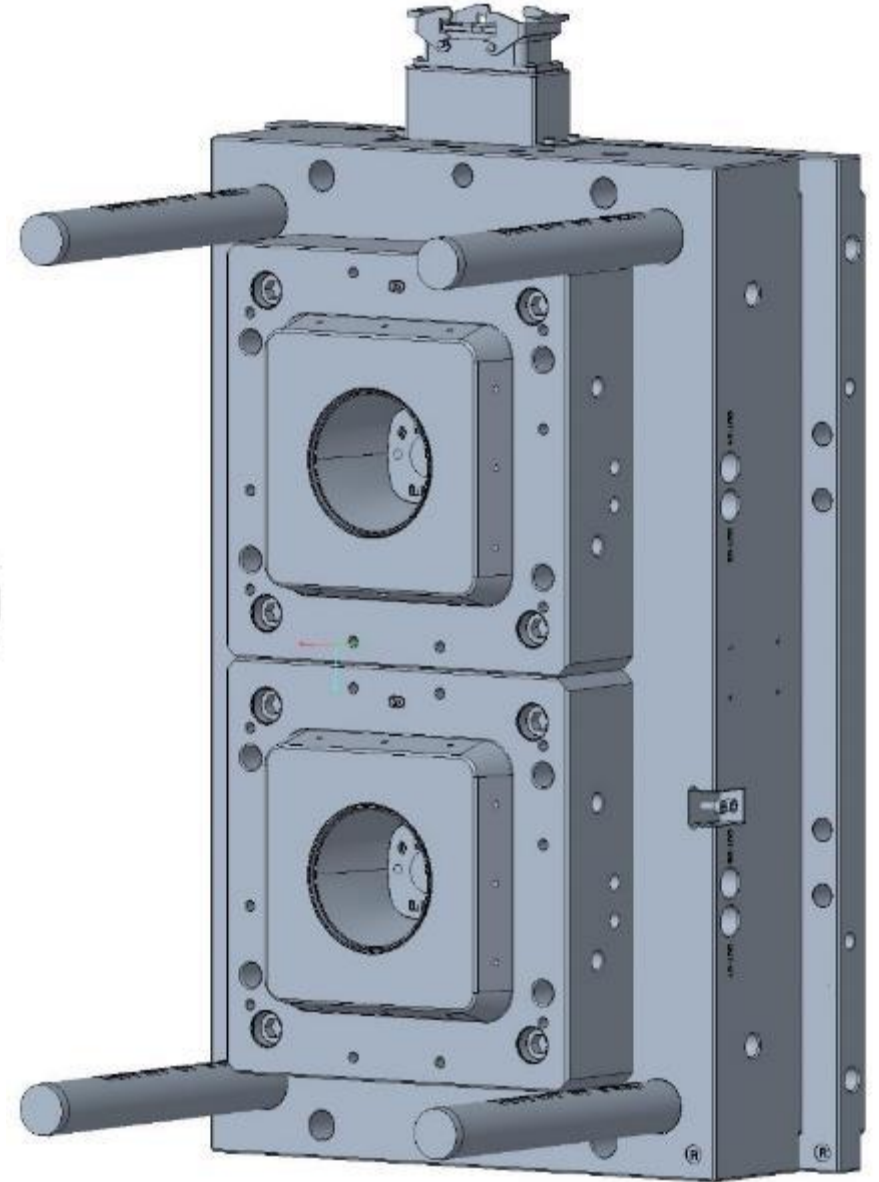
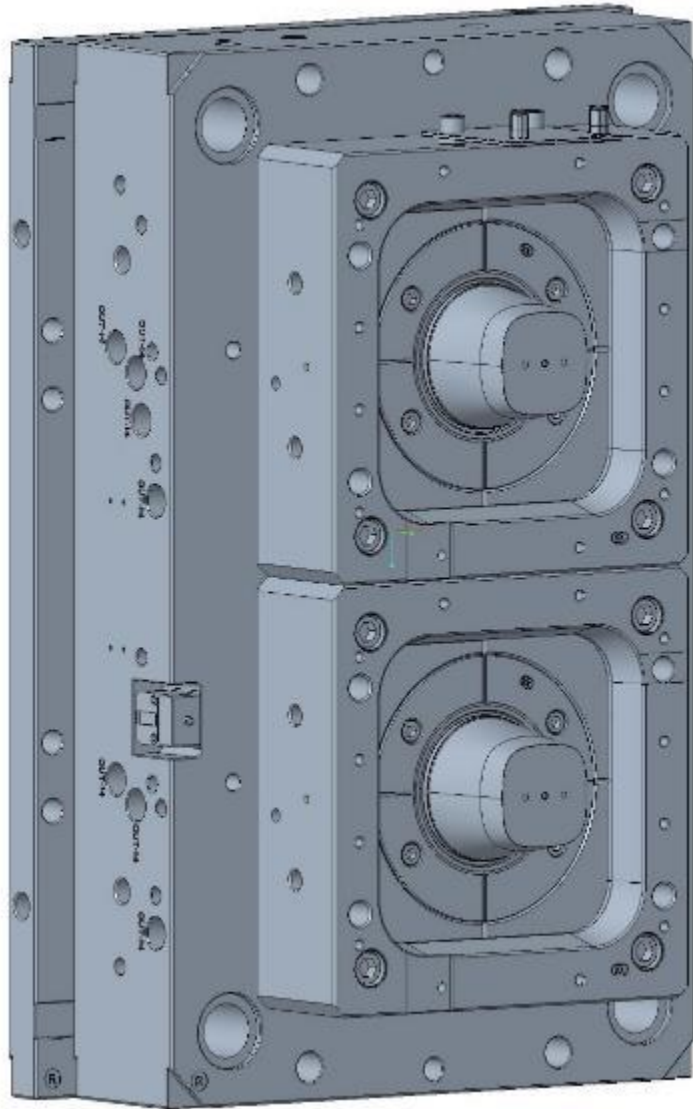




# Stack Mould - 12+12 Cavity

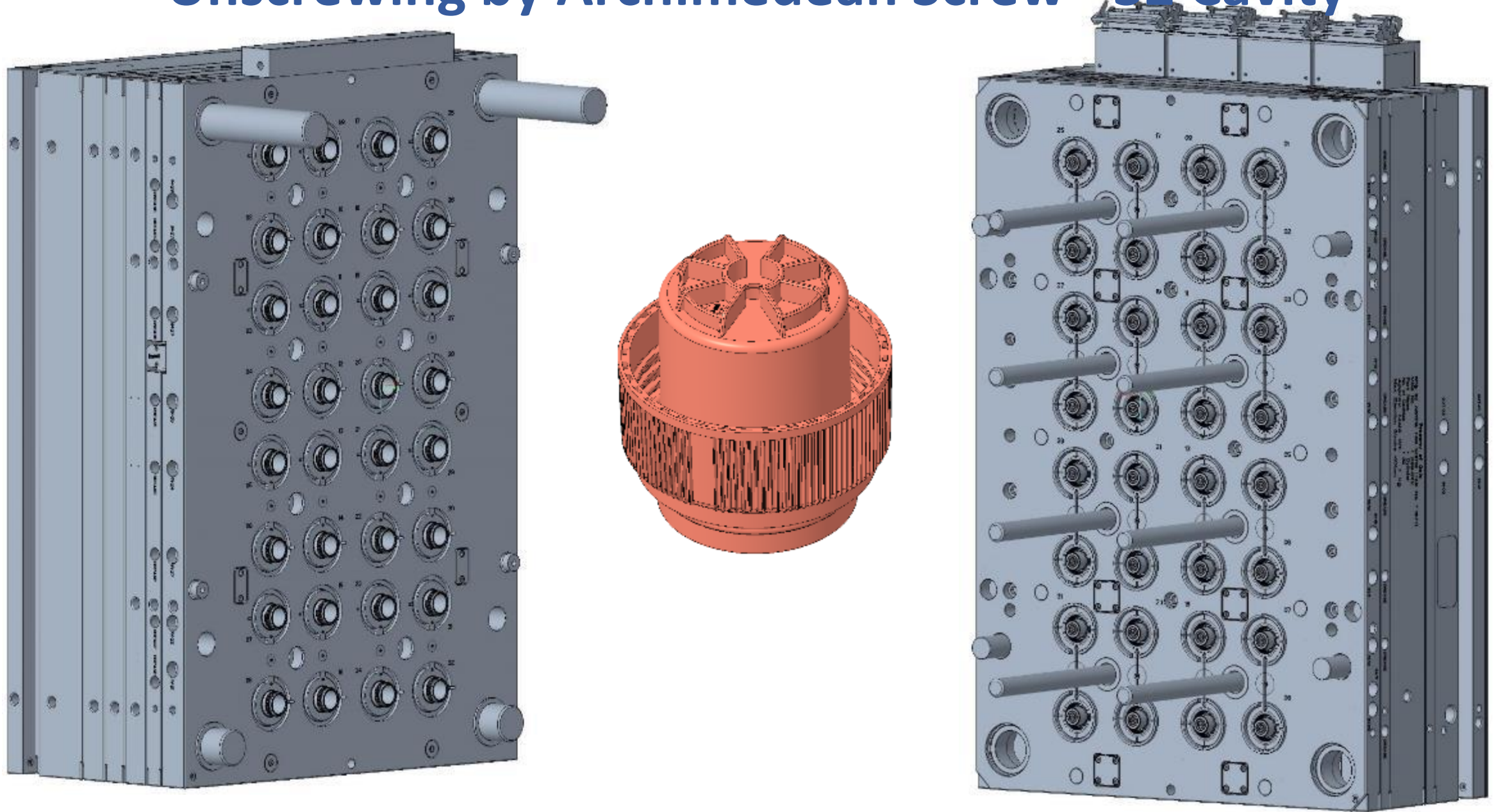


# Thin Walled Container - 2 Cavity





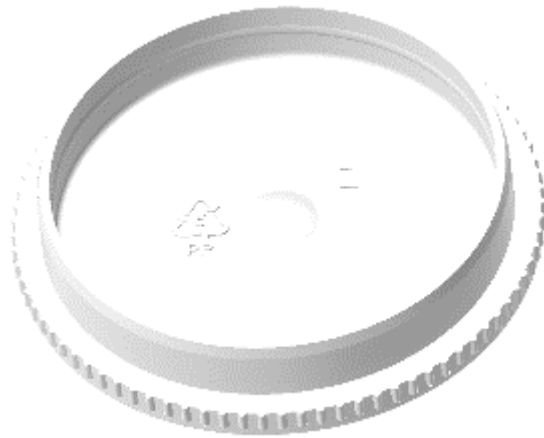
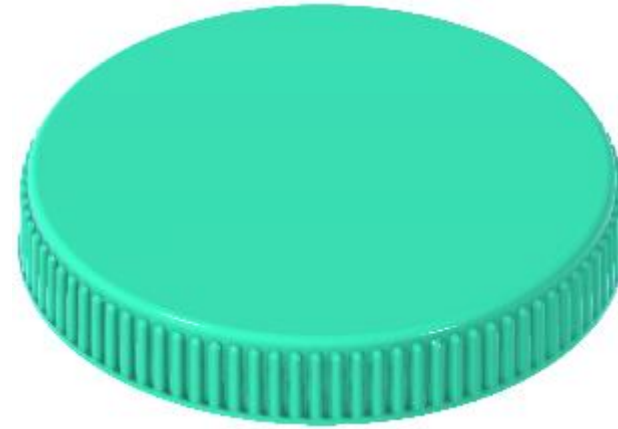
# Unscrewing by Archimedean Screw - 32 Cavity



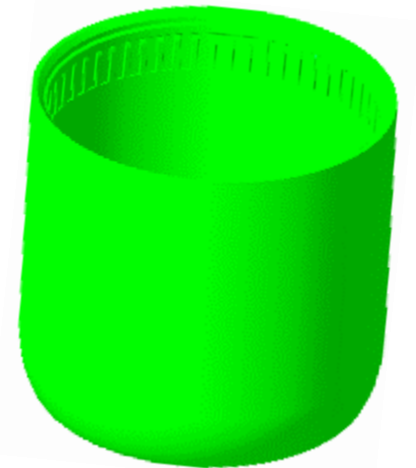
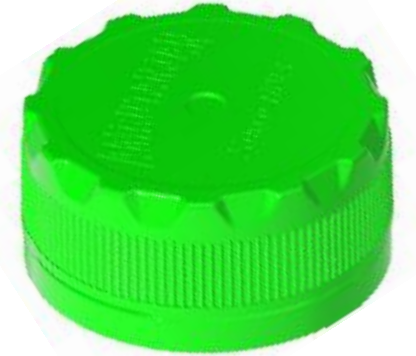
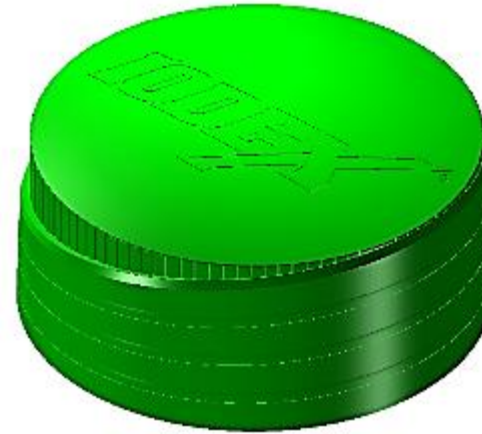
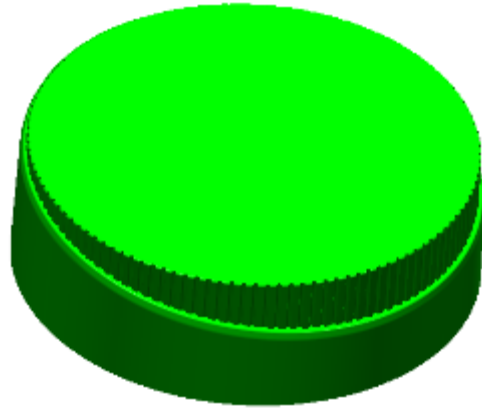


# **Components we made Moulds - FMCG And Pharma**

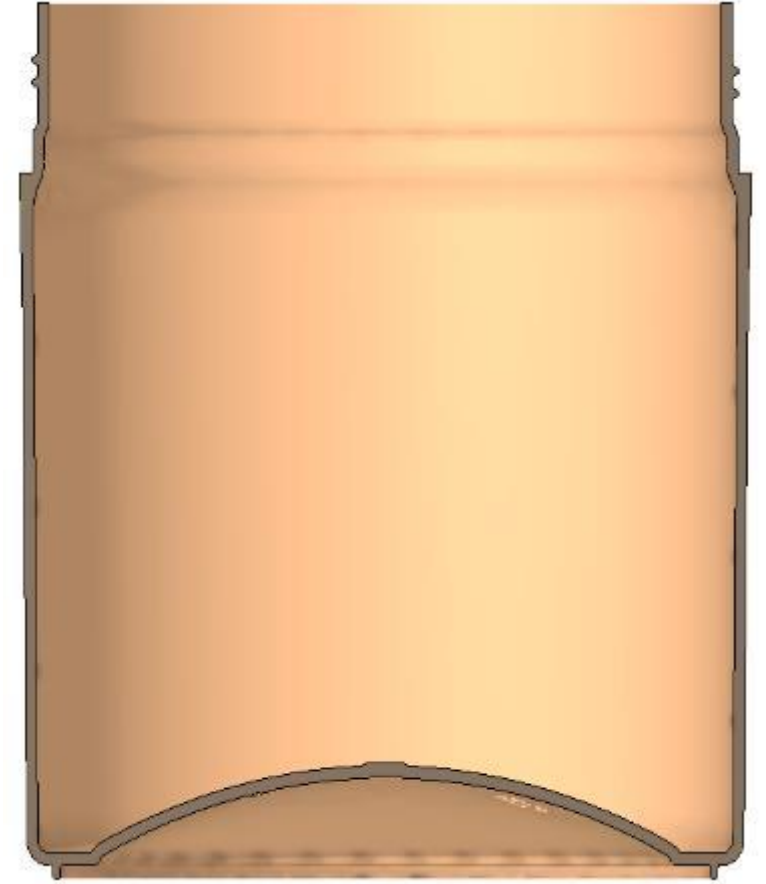
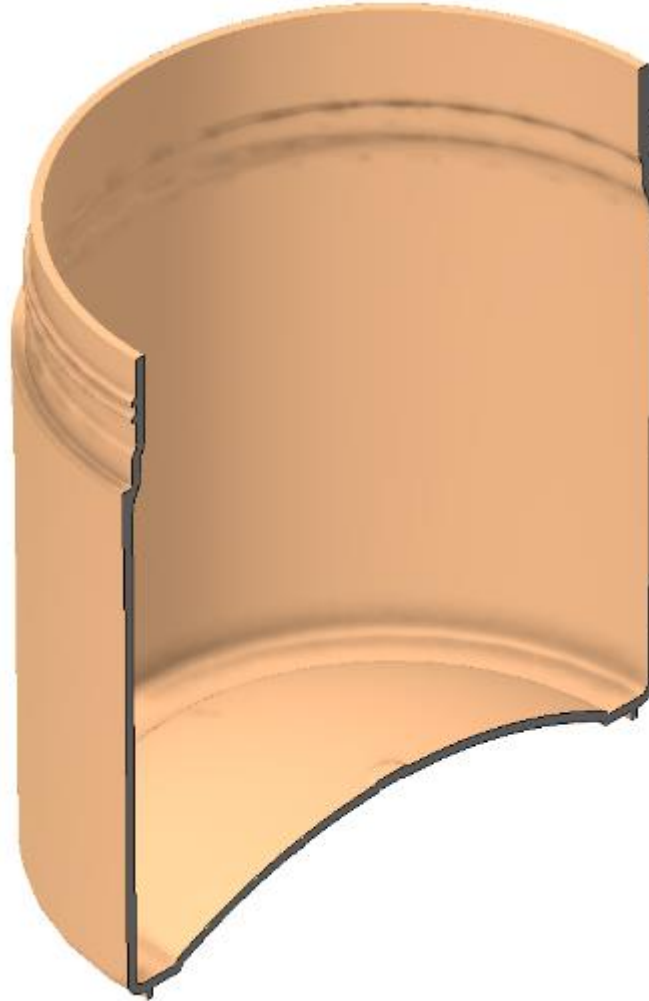
# Friction Fit Components



# Pain Balm Jars



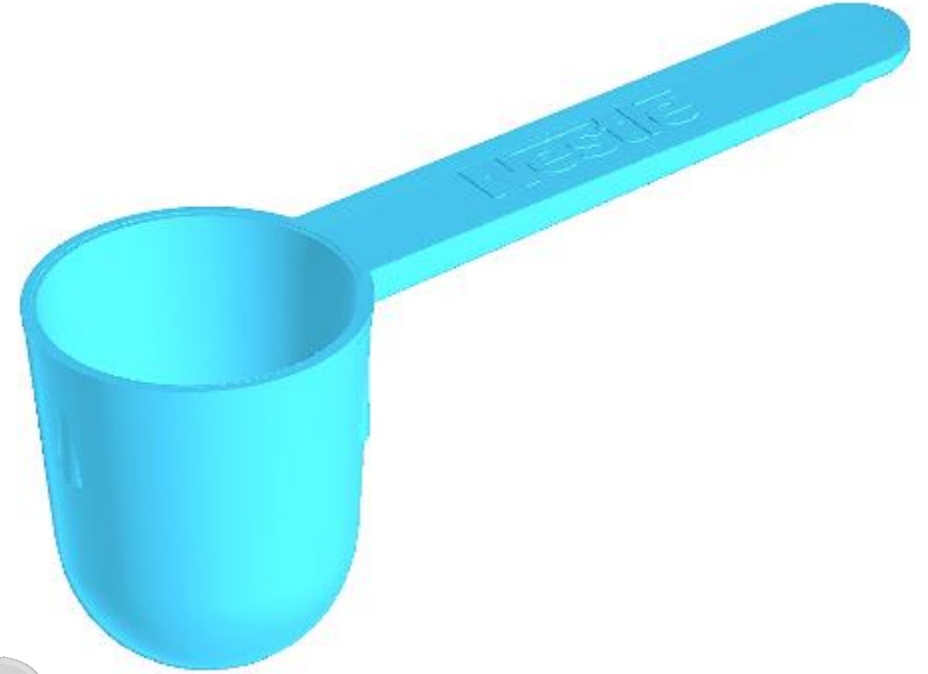
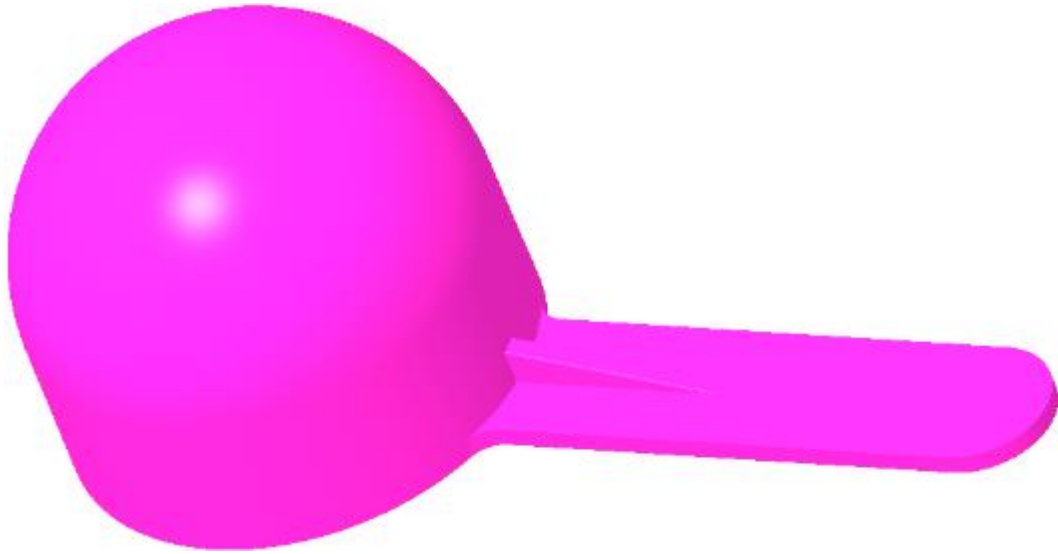
## Jars with Undercuts



# Inhalers



# Scoops



## Disc Tops



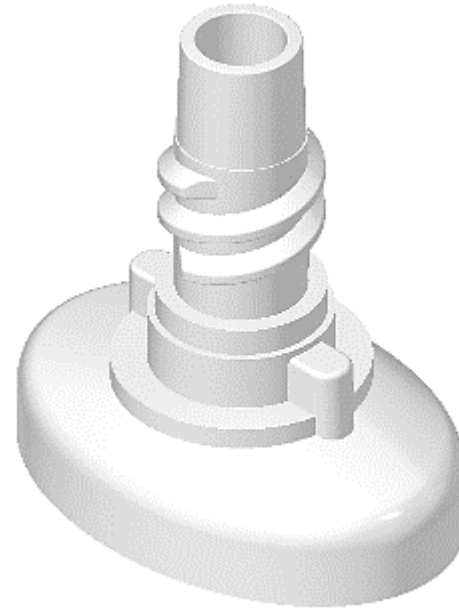


# Large Flip Top in Stack Mould





# Spouts, Shoulders & Caps



# CRC Caps



## TE caps



# Unscrewing Caps



# Tube Top Flip Tops





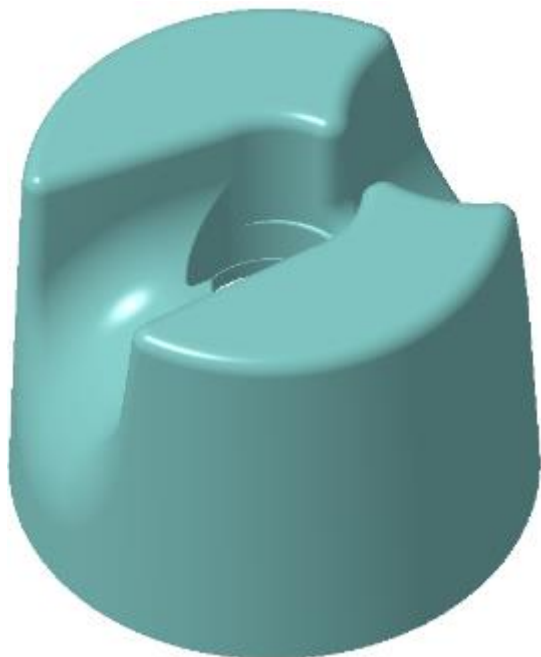
## Flip Tops with TE



# Bi-Injection Caps

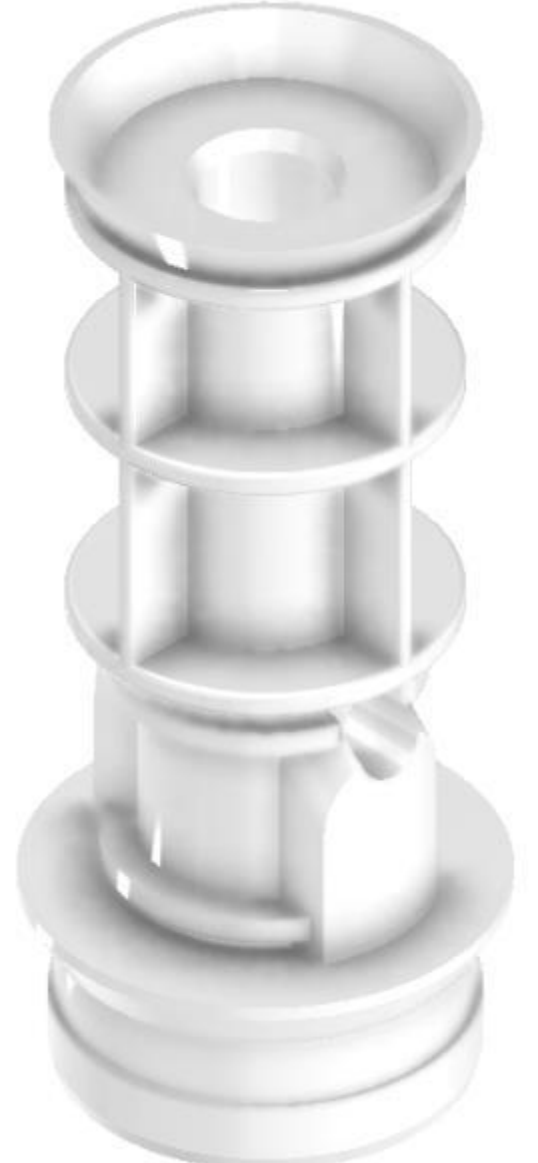


# Aerosols





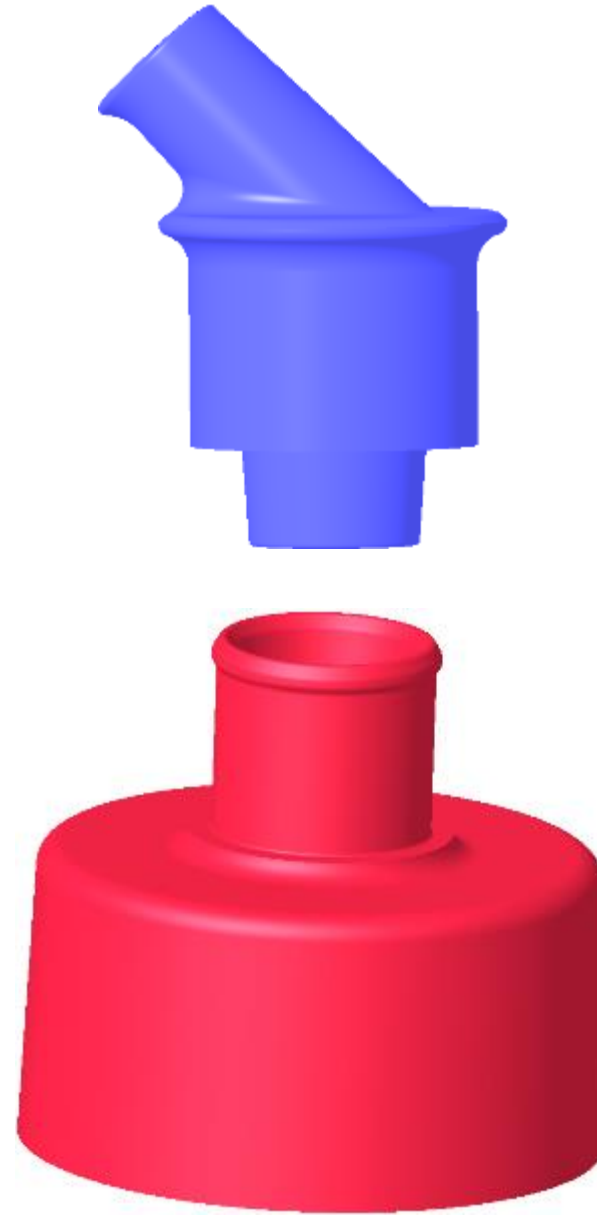
# Pump Parts



# Measuring Cup and Dispensing Spout for Laundry



# Push Pull



# Spatula



# Toilet Freshner



# Pens



# Tooth brushes





# Some Brands We Worked For



Jars & Caps for Pain Balms



Shoulders and Caps for Tubes



Bottles and Caps for Laundry



Creams and Cosmetics



Lip stick, Roll-on & Other Segments



Bottles and Jars for Food Industry



# Some of Our Esteemed Customers

**ALPLA**



**Aptar**  
beauty + home



**P&G**



**Cadbury**



**Sara Lee**



**taplast**



**scJohnson**



**Tupperware®**



**Johnson & Johnson**

**FERRERO**



**L'ORÉAL**

**Cipla**  
Caring for life

**Romsons**

## Video



**“Rush to Glory” in a record period of 9 days**

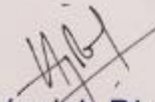
# ALPHA

## Alpha India Pvt. Ltd

B 4 & B 5, Phase – 1, IDA, Jeedimetla, Hyderabad – 500055

### Certificate of Appreciation

*We are pleased to present this certificate to Ms. Amritha Tool Crafts Private Limited on this day, the 20th November 2006 for successful completion of injection molding project “Rush to Glory” in a record period of 9 days.*

  
Vagish Dixit  
Managing Director

## RB - Completion of Project "Ophelia" in a record period of 11 days





- Unilever –  
Tooth Brush Innovation Project  
Grand Slam for South Asia
- Pilot mold in 2 weeks
  - Commercial mold in 9 weeks



# GSK - Bi-colour SENSODYNE tooth brush delivered in a very challenging time line



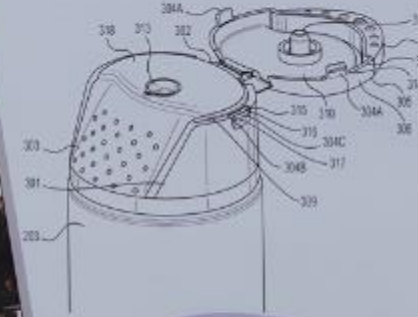


## GSK - Successfully launched Project GRACE 4 months in advance

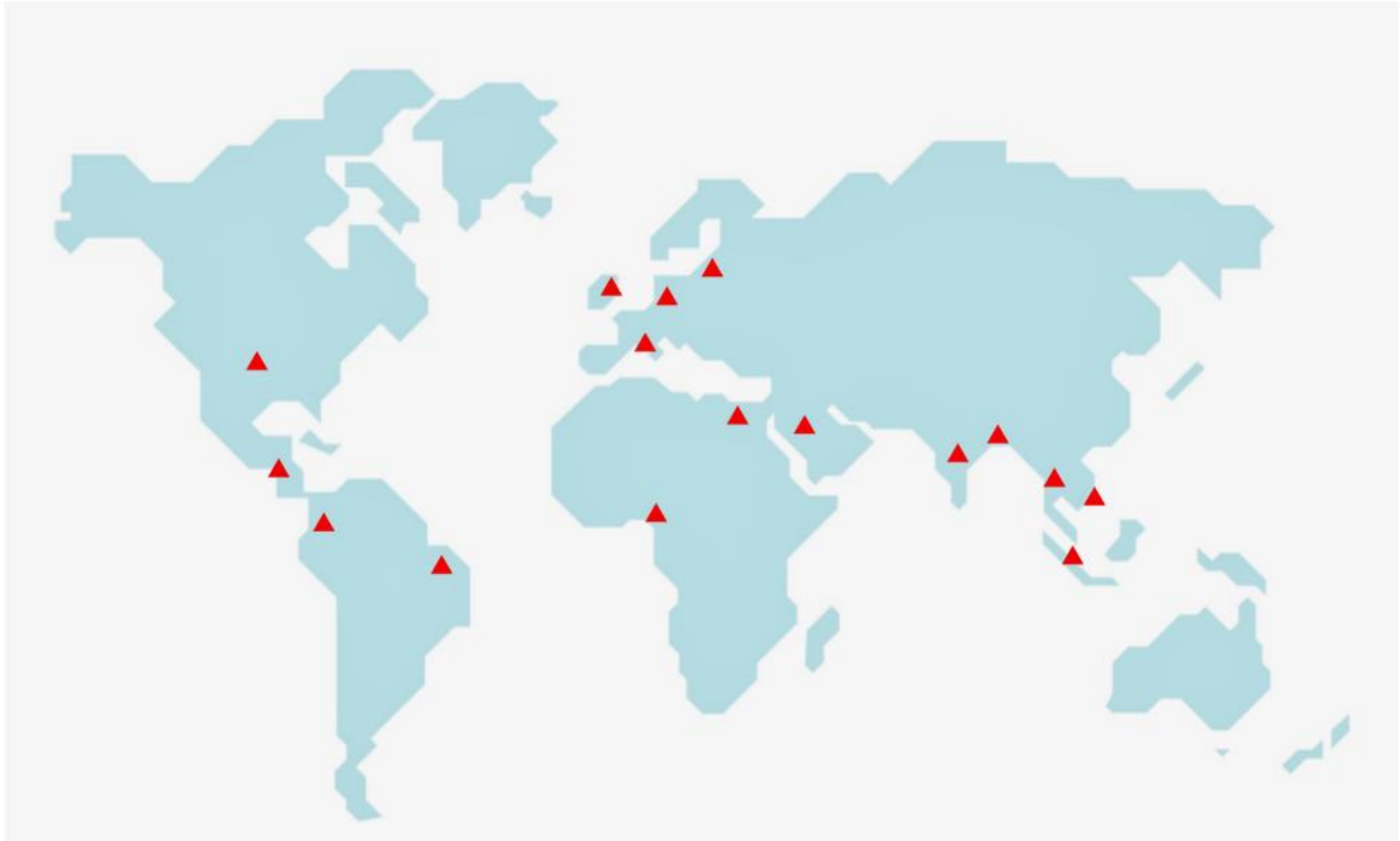


### Project GRACE : Voltaren Flip Top Cap

*A testimony to awesome team work of ATC & GSK leading to succesful launch 4 months in advance in Dec 2019*



# Global Footprint





**AMRITHA TOOL CRAFTS PVT. LTD.**

**THANK YOU**